

# ITGB1 Antibody



PACO21489

---

## Product Information

**Size:**

100ul

**Reactivity:**

Human, Mouse, Rat

**Source:**

Rabbit

**Isotype:**

**Protein Background:**

**Gene ID:**

ITGB1

**Uniprot**

P05556

**Synonyms:**

FNRB; MDF2; VLAB; MSK12; ITGB1

**Applications:**

ELISA, WB

**Recommended dilutions:**

ELISA:1:2000-1:10000, WB:1:500-1:1000

**Immunogen:**

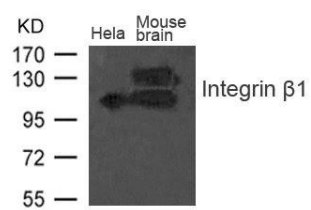
Peptide sequence around aa.790~794 (V-V-N-P-K) derived from Human Integrin b1 (CD29).

**Storage:**

Supplied at 1.0mg/mL in phosphate buffered saline (without Mg<sup>2+</sup> and Ca<sup>2+</sup>), pH 7.4, 150mM NaCl, 0.02% sodium azide and 50% glycerol.

## Product Images

---



Western blot analysis of extract from Mouse brain tissue and HeLa cells using Integrin b1(CD29) Antibody.