

Product Information

Size:

100ul

Reactivity:

Human, Mouse, Rat

Source:

Rabbit

Isotype:

IgG

Applications:

ELISA, WB

Recommended dilutions:

ELISA:1:2000-1:10000, WB:1:500-1:1000

Protein Background:

Seems to be required for initial steps of neuronal dispersion and cortex lamination during cerebral cortex development. May act by competing with the putative neuronal protein kinase DCAMKL1 in binding to a target protein. May in that way participate in a signaling pathway that is crucial for neuronal interaction before and during migration, possibly as part of a calcium ion-dependent signal transduction pathway. May be part with LIS-1 of an overlapping, but distinct, signaling pathways that promote neuronal migration. Pilz D. T. , Matsumoto N. , Minnerath S. R. , Mills P. Hum. Mol. Genet. 7:2029-2037(1998).

Gene ID:

DCX

Uniprot

O43602

Synonyms:

DCX; DC; DBCN

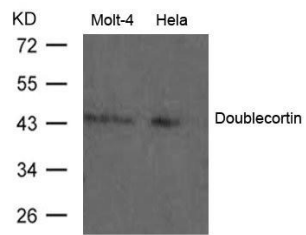
Immunogen:

Peptide sequence around aa.413~417(P-T-S-P-G) derived from Human Doublecortin.

Storage:

Supplied at 1.0mg/mL in phosphate buffered saline (without Mg²⁺ and Ca²⁺), pH 7.4, 150mM NaCl, 0.02% sodium azide and 50% glycerol.

Product Images



Western blot analysis of extract from Molt-4 and HeLa cells using Doublecortin Antibody.