

LIN28B Antibody



PACO21520

Product Information

Size:

100ul

Reactivity:

Human

Source:

Rabbit

Isotype:

Protein Background:

Gene ID:

LIN28B

Uniprot

Q6ZN17

Synonyms:

CSDD2; FLJ16517;

Applications:

ELISA, WB

Immunogen:

Peptide sequence around aa.242~246(P-S-V-Q-K) derived from Human LIN28B.

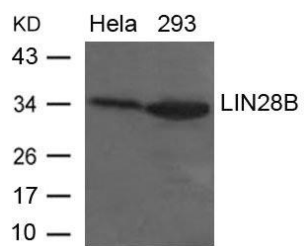
Recommended dilutions:

ELISA:1:2000-1:10000, WB:1:500-1:1000

Storage:

Supplied at 1.0mg/mL in phosphate buffered saline (without Mg²⁺ and Ca²⁺), pH 7.4, 150mM NaCl, 0.02% sodium azide and 50% glycerol.

Product Images



Western blot analysis of extracts from HeLa and 293 cells using LIN28B Antibody.