

PAX5 Antibody



PACO21524

Product Information

Size:

100ul

Reactivity:

Human, Mouse

Source:

Rabbit

Isotype:

IgG

Applications:

ELISA, WB

Recommended dilutions:

ELISA:1:2000-1:10000, WB:1:500-1:1000

Protein Background:**Gene ID:**

PAX5

Uniprot

Q02548

Synonyms:

BSAP

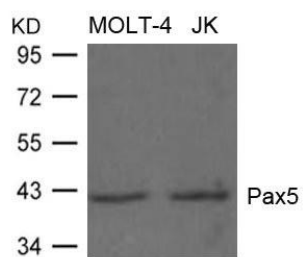
Immunogen:

Peptide sequence around aa.6~10(N-Y-P-T-P) derived from Human Pax5.

Storage:

Supplied at 1.0mg/mL in phosphate buffered saline (without Mg²⁺ and Ca²⁺), pH 7.4, 150mM NaCl, 0.02% sodium azide and 50% glycerol.

Product Images



Western blot analysis of extracts from MOLT-4 and JK cells using Pax5 Antibody.