

# CEBPB Antibody



PACO21529

---

## Product Information

**Size:**

100ul

**Reactivity:**

Human

**Source:**

Rabbit

**Isotype:**

**Protein Background:**

**Gene ID:**

CEBPB

**Uniprot**

P17676

**Synonyms:**

IL6DBP; CRP2; TCF5; LAP; NF-IL6

**Applications:**

ELISA, WB

**Immunogen:**

Peptide sequence around aa.336~340(E-P-L-L-A) derived from Human C/EBPb.

**Recommended dilutions:**

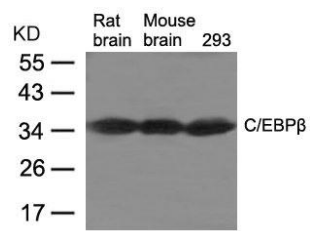
ELISA:1:2000-1:10000, WB:1:500-1:1000

**Storage:**

Supplied at 1.0mg/mL in phosphate buffered saline (without Mg<sup>2+</sup> and Ca<sup>2+</sup>), pH 7.4, 150mM NaCl, 0.02% sodium azide and 50% glycerol.

## Product Images

---



Western blot analysis of extracts from Rat brain, Mouse brain tissue and 293 cells using C/EBP $\beta$  Antibody.