

KRT7 Antibody



PACO21536

Product Information

Size:

100ul

Reactivity:

Human

Source:

Rabbit

Isotype:**Protein Background:****Gene ID:**

KRT7

Uniprot

P08729

Synonyms:

K7; CK7; SCL; K2C7; MGC3625

Applications:

ELISA, WB

Immunogen:

Peptide sequence around aa.22~26(A-Q-V-R-L) derived from Human Keratin 7.

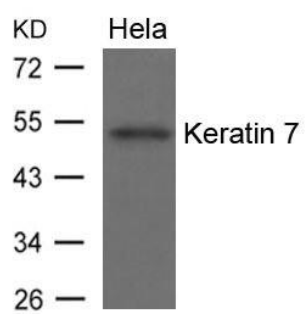
Recommended dilutions:

ELISA:1:2000-1:10000, WB:1:500-1:1000

Storage:

Supplied at 1.0mg/mL in phosphate buffered saline (without Mg²⁺ and Ca²⁺), pH 7.4, 150mM NaCl, 0.02% sodium azide and 50% glycerol.

Product Images



Western blot analysis of extracts from HeLa cells using Keratin 7 Antibody.