

# RPS6KA5 (Ab-376) Antibody



PACO21539

---

## Product Information

**Size:**

100ul

**Reactivity:**

Human, Mouse, Rat

**Source:**

Rabbit

**Isotype:****Protein Background:****Gene ID:**

RPS6KA5

**Uniprot**

O75582

**Synonyms:**

MSPK1; RPS6KA5;

**Applications:**

ELISA, WB

**Immunogen:**

Peptide sequence around aa.374~378 (G-Y-S-F-V) derived from Human MSK1.

**Recommended dilutions:**

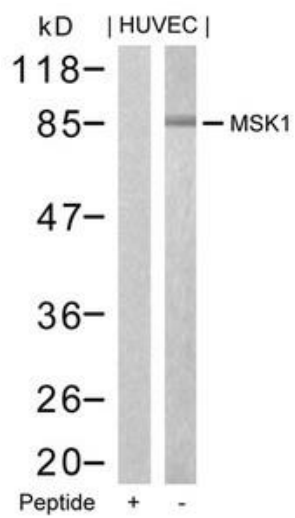
ELISA:1:2000-1:10000, WB:1:500-1:1000

**Storage:**

Supplied at 1.0mg/mL in phosphate buffered saline (without Mg<sup>2+</sup> and Ca<sup>2+</sup>), pH 7.4, 150mM NaCl, 0.02% sodium azide and 50% glycerol.

## Product Images

---



Western blot analysis of extracts from HUVEC cells using MSK1(Ab-376) Antibody and the same antibody preincubated with blocking peptide.