

CASP8 Antibody



PACO21543

Product Information

Size:

100ul

Reactivity:

Human

Source:

Rabbit

Isotype:

IgG

Applications:

ELISA, WB

Recommended dilutions:

ELISA:1:2000-1:10000, WB:1:500-1:1000

Protein Background:

Gene ID:

CASP8

Uniprot

Q14790

Synonyms:

ICE-like apoptotic protease 5

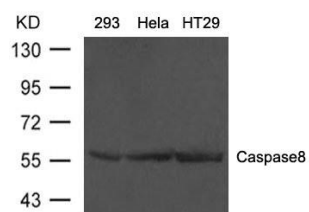
Immunogen:

Peptide sequence around aa.217~221 (S-E-S-Q-T) derived from Caspase 8.

Storage:

Supplied at 1.0mg/mL in phosphate buffered saline (without Mg²⁺ and Ca²⁺), pH 7.4, 150mM NaCl, 0.02% sodium azide and 50% glycerol.

Product Images



Western blot analysis of extract from 293, HeLa and HT29 cells using Caspase8 Antibody.