

IGFBP3 Antibody



PACO21557

Product Information

Size:

100ul

Reactivity:

Human

Source:

Rabbit

Isotype:

IgG

Applications:

ELISA, WB

Recommended dilutions:

ELISA:1:2000-1:10000, WB:1:500-1:1000

Protein Background:**Gene ID:**

IGFBP3

Uniprot

P17936

Synonyms:

IBP3; BP-53;

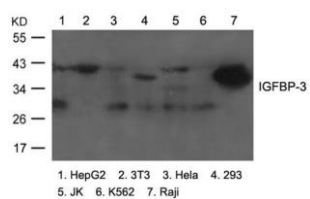
Immunogen:

Peptide sequence around aa.185~189(R-Y-K-V-D) derived from Human IGFBP-3.

Storage:

Supplied at 1.0mg/mL in phosphate buffered saline (without Mg²⁺ and Ca²⁺), pH 7.4, 150mM NaCl, 0.02% sodium azide and 50% glycerol.

Product Images



Western blot analysis of extracts from various cells using IGFBP-3 Antibody.