

LCK (Ab-394) Antibody



PACO21564

Product Information

Size:

100ul

Reactivity:

Human, Mouse

Source:

Rabbit

Isotype:

IgG

Applications:

ELISA, WB

Recommended dilutions:

ELISA:1:2000-1:10000, WB:1:500-1:1000

Protein Background:**Gene ID:**

LCK

Uniprot

P06239

Synonyms:

LSK; YT16; p56lck; pp58lck;

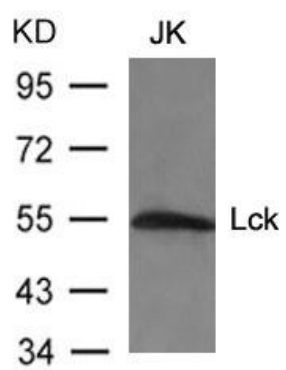
Immunogen:

Peptide sequence around aa.392-396(N-E-Y-T-A) derived from Human Lck.

Storage:

Supplied at 1.0mg/mL in phosphate buffered saline (without Mg²⁺ and Ca²⁺), pH 7.4, 150mM NaCl, 0.02% sodium azide and 50% glycerol.

Product Images



Western blot analysis of extracts from JK cells using Lck(Ab-394) Antibody.