

---

## Product Information

**Size:**

100ul

**Reactivity:**

Human, Mouse, Rat

**Source:**

Rabbit

**Isotype:**

IgG

**Applications:**

ELISA, WB

**Recommended dilutions:**

ELISA:1:2000-1:10000, WB:1:500-1:2000

**Protein Background:**

The protein encoded by this gene is part of a complex of proteins that constitute adherens junctions (AJs). AJs are necessary for the creation and maintenance of epithelial cell layers by regulating cell growth and adhesion between cells. The encoded protein also anchors the actin cytoskeleton and may be responsible for transmitting the contact inhibition signal that causes cells to stop dividing once the epithelial sheet is complete. Finally, this protein binds to the product of the APC gene, which is mutated in adenomatous polyposis of the colon. Mutations in this gene are a cause of colorectal cancer (CRC), pilomatixoma (PTR), medulloblastoma (MDB), and ovarian cancer. Three transcript variants encoding the same protein have been found for this gene. [

**Gene ID:**

CTNNB1

**Uniprot**

P35222

**Synonyms:**

Catenin beta-1

**Immunogen:**

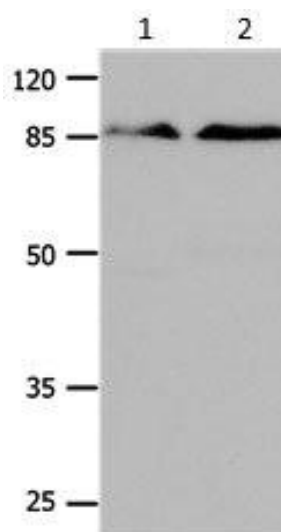
Synthetic peptide corresponding to a region derived from 757-770 amino acid, of Human Catenin beta-1.

**Storage:**

Supplied at 0.7mg/mL in phosphate buffered saline (without Mg<sup>2+</sup> and Ca<sup>2+</sup>), pH 7.3, 0.05% sodium azide and 50% glycerol.

## Product Images

---



Gel: 10%SDS-PAGE  
Lane1: Mouse brain tissue lysate  
Lane2: Mouse lung tissue lysate  
Lysates: 24 ug per lane  
Primary antibody: 1/350 dilution  
Secondary antibody: Donkey anti Rabbit IgG - H&L (HRP) at 1/5000 dilution  
Exposure time: 1 minute.