

FHL2 Antibody

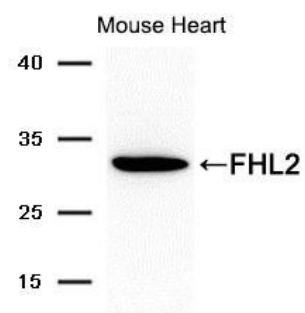


PACO21575

Product Information

Size:	Protein Background:
100ul	
Reactivity:	Gene ID:
Human	FHL2
Source:	Uniprot
Rabbit	Q14192
Isotype:	Synonyms:
IgG	SLIM3; AAG11; FHL-2; DRAL; aging-associated gene 11
Applications:	Immunogen:
ELISA, WB	Peptide sequence around aa.16~28 (I-L-R-E-E) derived from Human FHL2.
Recommended dilutions:	Storage:
ELISA:1:2000-1:10000, WB:1:500-1:1000	Supplied at 1.0mg/mL in phosphate buffered saline (without Mg ²⁺ and Ca ²⁺), pH 7.4, 150mM NaCl, 0.02% sodium azide and 50% glycerol.

Product Images



Western blot analysis of extracts from mouse brain tissue using FLH2 Antibody.