

ITGB1 (Ab-789) Antibody



PACO21582

Product Information

Size:

100ul

Reactivity:

Human, Mouse, Rat

Source:

Rabbit

Isotype:

IgG

Applications:

ELISA, WB

Recommended dilutions:

ELISA:1:2000-1:10000, WB:1:500-1:3000

Protein Background:**Gene ID:**

ITGB1

Uniprot

P05556

Synonyms:

CD29; FNRB; Fibronectin receptor beta subunit; ITB1; Integrin VLA-4 beta subunit

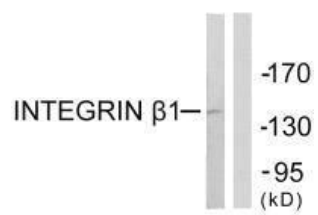
Immunogen:

Synthesized non-phosphopeptide derived from human Integrin β 1 around the phosphorylation site of threonine 789 (V-T-T(p)-V-V).

Storage:

Rabbit IgG in phosphate buffered saline (without Mg²⁺ and Ca²⁺), pH 7.4, 150mM NaCl, 0.02% sodium azide and 50% glycerol.

Product Images



Western blot analysis of extracts from Jurkat cells, using Integrin beta 1 (Ab-789) antibody.