

# CHEK1 (Ab-280) Antibody



PACO21588

---

## Product Information

**Size:**

100ul

**Reactivity:**

Human

**Source:**

Rabbit

**Isotype:**

IgG

**Applications:**

ELISA, WB

**Recommended dilutions:**

ELISA:1:2000-1:10000, WB:1:500-1:3000

**Protein Background:**

**Gene ID:**

CHEK1

**Uniprot**

O14757

**Synonyms:**

CHEK1; Chk1; kinase Chk1;

**Immunogen:**

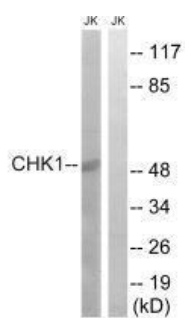
Synthesized non-phosphopeptide derived from human Chk1 around the phosphorylation site of Serine 280.

**Storage:**

Rabbit IgG in phosphate buffered saline (without Mg<sup>2+</sup> and Ca<sup>2+</sup>), pH 7.4, 150mM NaCl, 0.02% sodium azide and 50% glycerol.

## Product Images

---



Western blot analysis of extracts from JurKat cells, using Chk1 (Ab-280) antibody.