

**EPHB1/EPHB2/EPHB3/EPHB4 (Ab-600/602/614/596) Antibody**  
**PACO21598**



---

**Product Information**

**Size:**

100ul

**Reactivity:**

Human, Mouse

**Source:**

Rabbit

**Isotype:**

IgG

**Applications:**

ELISA, WB

**Recommended dilutions:**

ELISA:1:2000-1:10000, WB:1:500-1:3000

**Protein Background:**

**Gene ID:**

EPHB1/EPHB2/EPHB3/EPHB4

**Uniprot**

P54762/P29323/P54753/P54760

**Synonyms:**

EC 2.7.10.1; ELK; EPB1; Eph receptor B1; Ephrin type-B receptor 1 precursor

**Immunogen:**

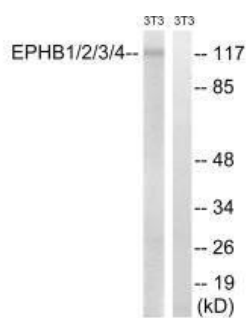
Synthesized non-phosphopeptide derived from human EPHB1/2/3/4 around the phosphorylation site of tyrosine 600/602/614/596 (F-T-Y(p)-E-D).

**Storage:**

Rabbit IgG in phosphate buffered saline (without Mg<sup>2+</sup> and Ca<sup>2+</sup>), pH 7.4, 150mM NaCl, 0.02% sodium azide and 50% glycerol.

## Product Images

---



Western blot analysis of extracts from 3T3 cells, treated with heat shock, using EPHB1/2/3/4 (Ab-600/602/614/596) antibody.