

MAP2K3 (Ab-222) Antibody



PACO21603

Product Information

Size:

100ul

Reactivity:

Human, Mouse

Source:

Rabbit

Isotype:

IgG

Applications:

ELISA, WB, IF

Recommended dilutions:

ELISA:1:2000-1:10000, WB:1:500-1:3000,
IF:1:50-1:200

Protein Background:

Dual specificity kinase. Is activated by cytokines and environmental stress in vivo. Catalyzes the concomitant phosphorylation of a threonine and a tyrosine residue in the MAP kinase p38. The MGC Project Team; Genome Res. 14:2121-2127(2004).

Gene ID:

MAP2K3

Uniprot

P46734

Synonyms:

dual specificity mitogen-activated protein kinase kinase 3; EC 2.7.12.2; kinase MKK3; MAP kinase kinase 3; MAP2K3

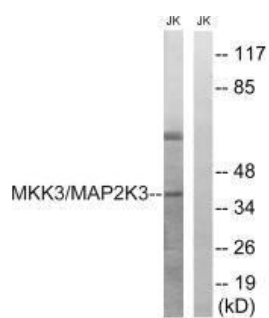
Immunogen:

Synthesized non-phosphopeptide derived from human MAP2K3 around the phosphorylation site of threonine 222 (A-K-T(p)-M-D).

Storage:

Rabbit IgG in phosphate buffered saline (without Mg²⁺ and Ca²⁺), pH 7.4, 150mM NaCl, 0.02% sodium azide and 50% glycerol.

Product Images



Western blot analysis of extracts from Jurkat cells, treated with serum (20%, 15mins), using MAP2K3 (Ab-222) antibody.