

PAK2 (Ab-192) Antibody



PACO21605

Product Information

Size:

100ul

Reactivity:

Human, Mouse

Source:

Rabbit

Isotype:

IgG

Applications:

ELISA, WB

Recommended dilutions:

ELISA:1:2000-1:10000, WB:1:500-1:3000

Protein Background:**Gene ID:**

PAK2

Uniprot

Q13177

Synonyms:

EC 2.7.11.1; gamma-PAK; kinase PAK2; P21-activated kinase 2; p21-activated kinase 2

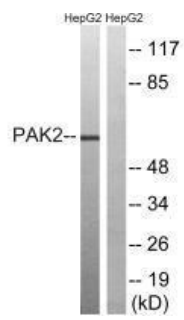
Immunogen:

Synthesized non-phosphopeptide derived from human PAK2 around the phosphorylation site of serine 192 (T-K-S(p)-I-Y).

Storage:

Rabbit IgG in phosphate buffered saline (without Mg²⁺ and Ca²⁺), pH 7.4, 150mM NaCl, 0.02% sodium azide and 50% glycerol.

Product Images



Western blot analysis of extracts from HepG2 cells, treated with serum (20%, 15mins), using PAK2 (Ab-192) antibody.