

PACO21609

Product Information

Size:

100ul

Reactivity:

Human, Mouse

Source:

Rabbit

Isotype:

IgG

Applications:

ELISA, WB

Recommended dilutions:

ELISA:1:2000-1:10000, WB:1:500-1:3000

Protein Background:

This gene encodes a protein that belongs to the serine/threonine protein kinase family of proteins. The encoded protein plays a role in the regulation of fluid balance in the intestine. A similar protein in mouse is thought to regulate differentiation and proliferation of cells in the colon. Alternate splicing results in multiple transcript variants. Fujii M. , FEBS Lett. 375:263-267(1995).

Gene ID:

PRKG2

Uniprot

Q13237

Synonyms:

CGK 2; cGKII; cGMP-dependent protein kinase 2; EC 2.7.11.12; KGP2

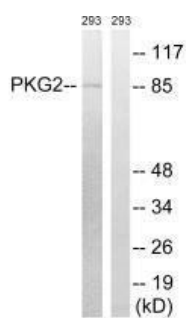
Immunogen:

Synthesized non-phosphopeptide derived from human PKG2 around the phosphorylation site of serine 126 (G-V-S(p)-A-E).

Storage:

Rabbit IgG in phosphate buffered saline (without Mg²⁺ and Ca²⁺), pH 7.4, 150mM NaCl, 0.02% sodium azide and 50% glycerol.

Product Images



Western blot analysis of extracts from 293 cells, treated with anisomycin (25ug/ml, 30mins), using PKG2 (Ab-126) antibody.