

PACO21615

Product Information

Size:

100ul

Reactivity:

Human

Source:

Rabbit

Isotype:

IgG

Applications:

ELISA, WB

Recommended dilutions:

ELISA:1:2000-1:10000, WB:1:500-1:3000

Protein Background:

Mediates B-cell B-cell interactions. May be involved in the localization of B-cells in lymphoid tissues. Binds sialylated glycoproteins; one of which is CD45. Preferentially binds to alpha-2,6-linked sialic acid, The sialic acid, recognition site can be masked by cis interactions with sialic acid, on the same cell surface. Upon ligand induced tyrosine phosphorylation in the immune response seems to be involved in regulation of B-cell antigen receptor signaling. Plays a role in positive regulation through interaction with Src family tyrosine kinases and may also act as an inhibitory receptor by recruiting cytoplasmic phosphatases via their SH2 domains that block signal transduction through dephosphorylation of signaling molecules. Wilson G. L. , J. Immunol. 150:5013-5024(1993).

Gene ID:

CD22

Uniprot

P20273

Synonyms:

B-cell receptor CD22; B-lymphocyte cell adhesion molecule; BL-CAM; Leu-14; Siglec-2

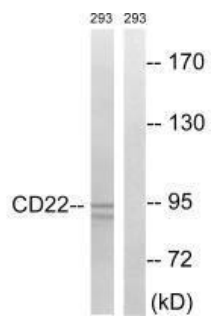
Immunogen:

Synthesized non-phosphopeptide derived from human BL-CAM around the phosphorylation site of tyrosine 807 (G-D-Y(p)-E-N).

Storage:

Rabbit IgG in phosphate buffered saline (without Mg²⁺ and Ca²⁺), pH 7.4, 150mM NaCl, 0.02% sodium azide and 50% glycerol.

Product Images



Western blot analysis of extracts from 293 cells, treated with Ca²⁺ (40nM, 40mins), using BL-CAM (Ab-807) antibody.