

APLP2 (Ab-755) Antibody



PACO21620

Product Information

Size:

100ul

Reactivity:

Human, Mouse

Source:

Rabbit

Isotype:

IgG

Applications:

ELISA, WB

Recommended dilutions:

ELISA:1:2000-1:10000, WB:1:500-1:3000

Protein Background:

May play a role in the regulation of hemostasis. The soluble form may have inhibitory properties towards coagulation factors. May interact with cellular G-protein signaling pathways. May bind to the DNA 5'-GTCACATG-3'(CDEI box). Inhibits trypsin, chymotrypsin, plasmin, factor XIA and plasma and glandular kallikrein. Modulates the Cu/Zn nitric oxide-catalyzed autodegradation of GPC1 heparan sulfate side chains in fibroblasts By similarity. Wasco W. , Nat. Genet. 5:95-99(1993).

Gene ID:

APLP2

Uniprot

Q06481

Synonyms:

Amyloid protein homolog; Amyloid-like protein 2 precursor; APLP2; APP2; APPH

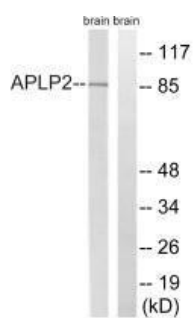
Immunogen:

Synthesized non-phosphopeptide derived from human APLP2 around the phosphorylation site of tyrosine 755 (P-T-Y(p)-K-Y).

Storage:

Rabbit IgG in phosphate buffered saline (without Mg²⁺ and Ca²⁺), pH 7.4, 150mM NaCl, 0.02% sodium azide and 50% glycerol.

Product Images



Western blot analysis of extracts from rat brain cells, using APLP2 (Ab-755) antibody.