

TAL1 (Ab-122) Antibody



PACO21631

Product Information

Size:

100ul

Reactivity:

Human, Mouse

Source:

Rabbit

Isotype:

IgG

Applications:

ELISA, WB

Recommended dilutions:

ELISA:1:2000-1:10000, WB:1:500-1:3000

Protein Background:

Implicated in the genesis of hemopoietic malignancies. It may play an important role in hemopoietic differentiation. Serves as a positive regulator of erythroid differentiation By similarity. Gregory S. G. , Nature 441:315-321(2006).

Gene ID:

TAL1

Uniprot

P17542

Synonyms:

T-cell acute lymphocytic leukemia protein 1; SCL; TCL5;

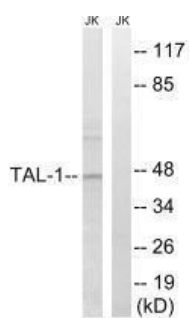
Immunogen:

Synthesized non-phosphopeptide derived from human TAL-1 around the phosphorylation site of serine 122 (Q-L-S(p)-P-P).

Storage:

Rabbit IgG in phosphate buffered saline (without Mg²⁺ and Ca²⁺), pH 7.4, 150mM NaCl, 0.02% sodium azide and 50% glycerol.

Product Images



Western blot analysis of extracts from Jurkat cells, treated with PMA (125ng/ml, 30mins), using TAL-1 (Ab-122) antibody.