

TPH2 (Ab-19) Antibody



PACO21638

Product Information

Size:

100ul

Reactivity:

Human, Mouse

Source:

Rabbit

Isotype:

IgG

Applications:

ELISA, WB

Recommended dilutions:

ELISA:1:2000-1:10000, WB:1:500-1:3000

Protein Background:

This gene encodes a member of the pterin-dependent aromatic acid, hydroxylase family. The encoded protein catalyzes the first and rate limiting step in the biosynthesis of serotonin, an important hormone and neurotransmitter. The human genome contains two related tryptophan hydroxylases, one on chromosome 11p15-p14 and one on chromosome 12q21. This gene is expressed predominantly in the brain stem. Mutations in this gene may be associated with psychiatric diseases such as bipolar affective disorder and major depression. Gibbs R. A. , Nature 440:346-351(2006).

Gene ID:

TPH2

Uniprot

Q8IWU9

Synonyms:

Neuronal tryptophan hydroxylase; NTPH; Tryptophan 5- monooxygenase 2;

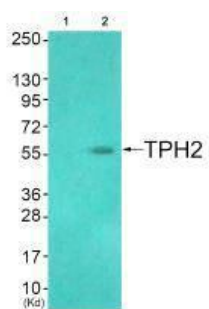
Immunogen:

Synthesized non-phosphopeptide derived from human TPH2 around the phosphorylation site of serine 19 (G-FI-S(p)-L-D).

Storage:

Rabbit IgG in phosphate buffered saline (without Mg²⁺ and Ca²⁺), pH 7.4, 150mM NaCl, 0.02% sodium azide and 50% glycerol.

Product Images



Western blot analysis of extracts from HuvEc cells (Lane 2), using TPH2 (Ab-19) antibody. The lane on the left is treated with synthesized peptide.