

TUBA1A/TUBA1B/TUBA1C/TUBA3C/TUBA3E/TUBA4A (Ab-272) Antibody
PACO21639



Product Information

Size:

100ul

Reactivity:

Human, Mouse

Source:

Rabbit

Isotype:

IgG

Applications:

ELISA, WB

Recommended dilutions:

ELISA:1:2000-1:10000, WB:1:500-1:3000

Protein Background:

Tubulin is the major constituent of microtubules. It binds two moles of GTP, one at an exchangeable site on the beta chain and one at a non-exchangeable site on the alpha chain. Sugano S., Nat. Genet. 36:40-45(2004).

Gene ID:

TUBA1A/TUBA1B/TUBA1C/TUBA3C/TUBA3E

Uniprot

Q71U36/P68363/Q9BQE3/Q13748/Q6PEY2/P68

Synonyms:

Alpha-tubulin 1; TBA1; TBA1A; TBA4A; Testis-specific alpha- tubulin

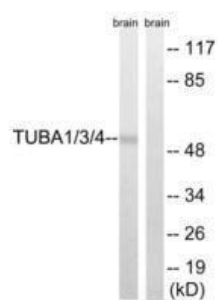
Immunogen:

Synthesized non-phosphopeptide derived from human TUBA1/3/4 around the phosphorylation site of tyrosine 272 (A-T-Y(p)-A-P).

Storage:

Rabbit IgG in phosphate buffered saline (without Mg²⁺ and Ca²⁺), pH 7.4, 150mM NaCl, 0.02% sodium azide and 50% glycerol.

Product Images



Western blot analysis of extracts from Rat brain cells, using TUBA1/3/4 (Ab-272) antibody.