

# EPHA2/EPHA5 (Ab-594) Antibody



PACO21642

---

## Product Information

**Size:**

100ul

**Reactivity:**

Human, Mouse

**Source:**

Rabbit

**Isotype:****Protein Background:****Gene ID:**

EPHA2/EPHA5

**Uniprot**

P29317/P54756

**Synonyms:**

ARCC2; ECK; EPH receptor A2; EPHA2; ephrin receptor EphA2

**Applications:**

ELISA, WB

**Recommended dilutions:**

ELISA:1:2000-1:10000, WB:1:500-1:3000

**Immunogen:**

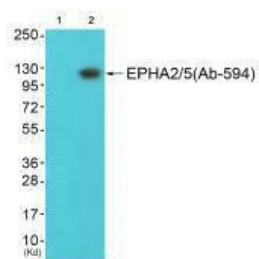
Synthesized non-phosphopeptide derived from human EPHA2 around the phosphorylation site of tyrosine 594.

**Storage:**

Rabbit IgG in phosphate buffered saline (without Mg<sup>2+</sup> and Ca<sup>2+</sup>), pH 7.4, 150mM NaCl, 0.02% sodium azide and 50% glycerol.

## Product Images

---



Western blot analysis of extracts from JK cells (Lane 2), using EPHA2/5 (Ab-594) antibody. The lane on the left is treated with synthesized peptide.