

# EPHA7 (Ab-791) Antibody



PACO21644

---

## Product Information

**Size:**

100ul

**Reactivity:**

Human, Mouse, Rat

**Source:**

Rabbit

**Isotype:**

IgG

**Applications:**

ELISA, WB

**Recommended dilutions:**

ELISA:1:2000-1:10000, WB:1:500-1:3000

**Protein Background:****Gene ID:**

EPHA7

**Uniprot**

Q15375

**Synonyms:**

EHK-3; EHK3; EK11; EPH homology kinase 3; Eph homology kinase-3

**Immunogen:**

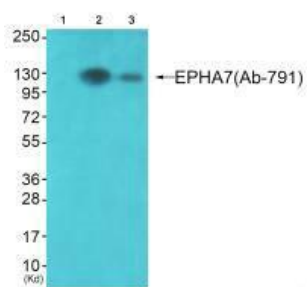
Synthesized peptide derived from Internal of human EPHA7.

**Storage:**

Rabbit IgG in phosphate buffered saline (without Mg<sup>2+</sup> and Ca<sup>2+</sup>), pH 7.4, 150mM NaCl, 0.02% sodium azide and 50% glycerol.

## Product Images

---



Western blot analysis of extracts from JK cells (Lane 2) and K562 cells (Lane 3), using EPHA7 (Ab-791) antibody. The lane on the left is treated with synthesized peptide.