

MERTK/TYRO3 (Ab-753) Antibody



PACO21647

Product Information

Size:

100ul

Reactivity:

Human, Mouse, Rat

Source:

Rabbit

Isotype:

IgG

Applications:

ELISA, WB

Recommended dilutions:

ELISA:1:2000-1:10000, WB:1:500-1:3000

Protein Background:**Gene ID:**

MERTK/TYRO3

Uniprot

Q12866/Q06418

Synonyms:

c-mer; c-mer proto-oncogene tyrosine kinase; MER; MER receptor tyrosine kinase; MERTK

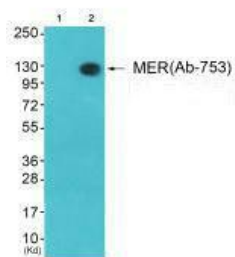
Immunogen:

Synthesized peptide derived from Internal of human MERTK.

Storage:

Rabbit IgG in phosphate buffered saline (without Mg²⁺ and Ca²⁺), pH 7.4, 150mM NaCl, 0.02% sodium azide and 50% glycerol.

Product Images



Western blot analysis of extracts from 3T3 cells (Lane 2), using MER (Ab-753) antibody. The lane on the left is treated with synthesized peptide.