

PAX5 Antibody



PACO21658

Product Information

Size:

100ul

Reactivity:

Human, Mouse

Source:

Rabbit

Isotype:

IgG

Applications:

ELISA, WB

Recommended dilutions:

ELISA:1:2000-1:10000, WB:1:500-1:3000

Protein Background:

May play an important role in B-cell differentiation as well as neural development and spermatogenesis. Involved in the regulation of the CD19 gene, a B-lymphoid-specific target gene.

Gene ID:

PAX5

Uniprot

Q02548

Synonyms:

BSAP; B-CELL LINEAGE-SPECIFIC ACTIVATOR PROTEIN; PAIRED DOMAIN GENE 5;

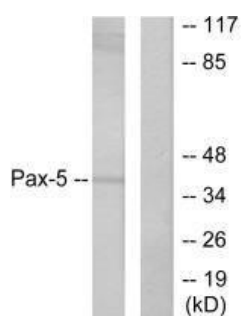
Immunogen:

Synthesized peptide derived from human Pax-5 antibody.

Storage:

Rabbit IgG in phosphate buffered saline (without Mg²⁺ and Ca²⁺), pH 7.4, 150mM NaCl, 0.02% sodium azide and 50% glycerol.

Product Images



Western blot analysis of extracts from 293 cells, using Pax-5 antibody.