

PACO21664

Product Information

Size:

100ul

Reactivity:

Human

Source:

Rabbit

Isotype:

IgG

Applications:

ELISA, WB

Recommended dilutions:

ELISA:1:2000-1:10000, WB:1:500-1:3000

Protein Background:

High affinity receptor for activated thrombin coupled to G proteins that stimulate phosphoinositide hydrolysis. May play a role in platelets activation and in vascular development. Kahn M. L., J. Clin. Invest. 103:879-887(1999).

Gene ID:

F2R

Uniprot

P25116

Synonyms:

CF2R; Coagulation factor II receptor; F2R; PAR-1; Proteinase activated receptor 1 precursor

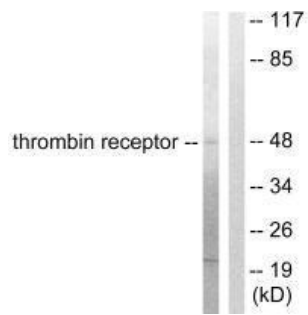
Immunogen:

Synthesized peptide derived from internal of human Thrombin Receptor.

Storage:

Rabbit IgG in phosphate buffered saline (without Mg²⁺ and Ca²⁺), pH 7.4, 150mM NaCl, 0.02% sodium azide and 50% glycerol.

Product Images



Western blot analysis of extracts from HeLa cells, treated with Nocodazole (1ug/ml, 18hours), using Thrombin Receptor antibody.