

Product Information

Size:

100ul

Reactivity:

Human, Mouse

Source:

Rabbit

Isotype:

IgG

Applications:

ELISA, WB

Recommended dilutions:

ELISA:1:2000-1:10000, WB:1:500-1:3000

Protein Background:

Catalytic component of a structure-specific DNA repair endonuclease responsible for the 5-prime incision during DNA repair. Involved in homologous recombination that assists in removing interstrand cross-link. Sijbers A. M. , Cell 86:811-822(1996).

Gene ID:

ERCC4

Uniprot

Q92889

Synonyms:

DNA repair endonuclease XPF; EC 3.1; DNA excision repair protein ERCC-4; DNA-repair protein complementing XP-F cells; Xeroderma pigmentosum group F-complementing protein

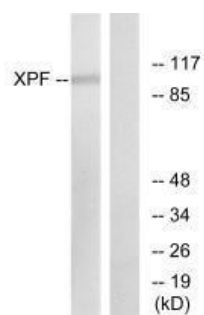
Immunogen:

Synthesized peptide derived from internal of human XPF.

Storage:

Rabbit IgG in phosphate buffered saline (without Mg²⁺ and Ca²⁺), pH 7.4, 150mM NaCl, 0.02% sodium azide and 50% glycerol.

Product Images



Western blot analysis of extracts from 293 cells, using XPF antibody.