

FOXE1 Antibody



PACO21676

Product Information

Size:

100ul

Reactivity:

Human, Mouse, Rat

Source:

Rabbit

Isotype:

IgG

Applications:

ELISA, WB

Recommended dilutions:

ELISA:1:2000-1:10000, WB:1:500-1:3000

Protein Background:

Probable transcription factor. Could be involved in thyroid gland organogenesis. Macchia P. E. , Biochimie 81:433-440(1999).

Gene ID:

FOXE1

Uniprot

O00358

Synonyms:

Forkhead box protein E1; Thyroid transcription factor 2; TTF-2; Forkhead-related protein FKHL15; FKHL15

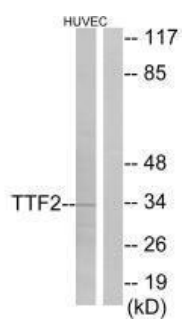
Immunogen:

Synthesized peptide derived from internal of human TTF2.

Storage:

Rabbit IgG in phosphate buffered saline (without Mg²⁺ and Ca²⁺), pH 7.4, 150mM NaCl, 0.02% sodium azide and 50% glycerol.

Product Images



Western blot analysis of extracts from HUVEC cells, using TTF2 antibody.