

PACO21677

---

## Product Information

**Size:**

100ul

**Reactivity:**

Human

**Source:**

Rabbit

**Isotype:**

IgG

**Applications:**

ELISA, WB

**Recommended dilutions:**

ELISA:1:2000-1:10000, WB:1:500-1:3000

**Protein Background:**

May play a role in tumorigenesis as a tumor suppressor. Altered expression of this protein and disruption of the molecular pathway it is involved in, may contribute directly to or modify tumorigenesis. The MGC Project Team, Genome Res. 14:2121-2127(2004).

**Gene ID:**

VWA5A

**Uniprot**

O00534

**Synonyms:**

Loss of heterozygosity 11 chromosomal region 2 gene A protein; Breast cancer suppressor candidate 1; BCSC-1; LOH11CR2A; BCSC1

**Immunogen:**

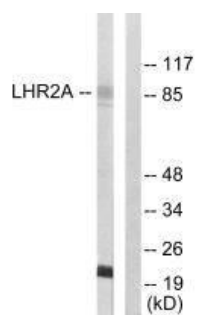
Synthesized peptide derived from Internal of human LHR2A.

**Storage:**

Rabbit IgG in phosphate buffered saline (without Mg<sup>2+</sup> and Ca<sup>2+</sup>), pH 7.4, 150mM NaCl, 0.02% sodium azide and 50% glycerol.

## Product Images

---



Western blot analysis of extracts from 293 cells, using LHR2A antibody.