

Product Information

Size:

100ul

Reactivity:

Human

Source:

Rabbit

Isotype:

IgG

Applications:

ELISA, WB

Recommended dilutions:

ELISA:1:2000-1:10000, WB:1:500-1:3000

Protein Background:

Phosphoprotein 32 (PP32) is a tumor suppressor that can inhibit several types of cancers, including prostate and breast cancers. The protein encoded by this gene is one of at least two proteins that are similar in amino acid, sequence to PP32 and are part of the same acid, c nuclear phosphoprotein gene family. However, unlike PP32, the encoded protein is tumorigenic. The tumor suppressor function of PP32 has been localized to a 25 amino acid, region that is divergent between PP32 and the protein encoded by this gene. This gene does not contain introns. Kochevar G. J. , Hum. Mutat. 23:546-551(2004).

Gene ID:

ANP32C

Uniprot

O43423

Synonyms:

acid, c leucine-rich nuclear phosphoprotein 32 family member C; Phosphoprotein 32-related protein 1; Tumorigenic protein pp32r1; ANP32C; PP32R1

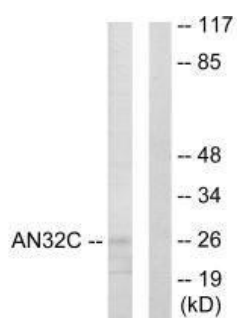
Immunogen:

Synthesized peptide derived from internal of human AN32C.

Storage:

Rabbit IgG in phosphate buffered saline (without Mg²⁺ and Ca²⁺), pH 7.4, 150mM NaCl, 0.02% sodium azide and 50% glycerol.

Product Images



Western blot analysis of extracts from HUVEC cells, using AN32C antibody.