

Product Information

Size:

100ul

Reactivity:

Human, Mouse

Source:

Rabbit

Isotype:

IgG

Applications:

ELISA, WB

Recommended dilutions:

ELISA:1:2000-1:10000, WB:1:500-1:3000

Protein Background:

Cell surface GPI-bound ligand for Eph receptors, a family of receptor tyrosine kinases which are crucial for migration, repulsion and adhesion during neuronal, vascular and epithelial development. Binds promiscuously Eph receptors residing on adjacent cells, leading to contact-dependent bidirectional signaling into neighboring cells. The signaling pathway downstream of the receptor is referred to as forward signaling while the signaling pathway downstream of the ephrin ligand is referred to as reverse signaling. With the EPHA2 receptor may play a role in bone remodeling through regulation of osteoclastogenesis and osteoblastogenesis By similarity. Aasheim H. C. , Biochem. Biophys. Res. Commun. 252:378-382(1998).

Gene ID:

EFNA2

Uniprot

O43921

Synonyms:

Ephrin-A2 [Precursor]; EPH-related receptor tyrosine kinase ligand 6; LERK-6; HEK7-ligand; HEK7-L

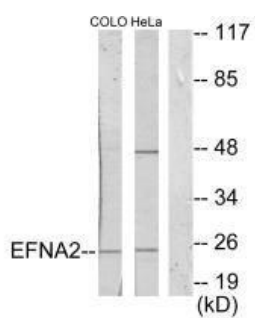
Immunogen:

Synthesized peptide derived from Internal of human EFNA2.

Storage:

Rabbit IgG in phosphate buffered saline (without Mg²⁺ and Ca²⁺), pH 7.4, 150mM NaCl, 0.02% sodium azide and 50% glycerol.

Product Images



Western blot analysis of extracts from COLO205 cells and HeLa cells, using EFNA2 antibody.