

# MAST3 Antibody



PACO21691

---

## Product Information

**Size:**

100ul

**Reactivity:**

Human, Mouse

**Source:**

Rabbit

**Isotype:**

**Applications:**

ELISA, WB

**Recommended dilutions:**

ELISA:1:2000-1:10000, WB:1:500-1:3000

**Protein Background:**

**Gene ID:**

MAST3

**Uniprot**

O60307

**Synonyms:**

Microtubule-associated serine/threonine-protein kinase 3; EC 2.7.11.1; MAST3; KIAA0561;

**Immunogen:**

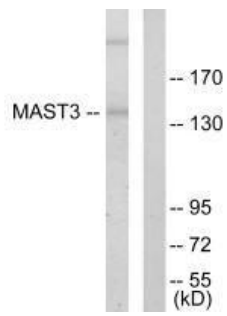
Synthesized peptide derived from internal of human MAST3.

**Storage:**

Rabbit IgG in phosphate buffered saline (without Mg<sup>2+</sup> and Ca<sup>2+</sup>), pH 7.4, 150mM NaCl, 0.02% sodium azide and 50% glycerol.

## Product Images

---



Western blot analysis of extracts from Jurkat cells, using MAST3 antibody.