

LMX1B Antibody



PACO21694

Product Information

Size:

100ul

Reactivity:

Human, Mouse

Source:

Rabbit

Isotype:

IgG

Applications:

ELISA, WB

Recommended dilutions:

ELISA:1:2000-1:10000, WB:1:500-1:3000

Protein Background:

Essential for the specification of dorsal limb fate at both the zeugopodal and autopodal levels. Vollrath D. , Hum. Mol. Genet. 7:1091-1098(1998).

Gene ID:

LMX1B

Uniprot

O60663

Synonyms:

LIM homeobox transcription factor 1 beta; LIM/homeobox protein LMX1B; LIM/homeobox protein 1.2; LMX-1.2; LMX1B

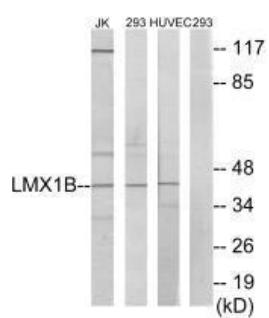
Immunogen:

Synthesized peptide derived from internal of human LMX1B.

Storage:

Rabbit IgG in phosphate buffered saline (without Mg²⁺ and Ca²⁺), pH 7.4, 150mM NaCl, 0.02% sodium azide and 50% glycerol.

Product Images



Western blot analysis of extracts from Jurkat cells, 293 cells and HUVEC cells, using LMX1B antibody.