

ZNF682 Antibody



PACO21713

Product Information

Size:

100ul

Reactivity:

Human

Source:

Rabbit

Isotype:

IgG

Applications:

ELISA, WB

Recommended dilutions:

ELISA:1:2000-1:10000, WB:1:500-1:3000

Protein Background:

May be involved in transcriptional regulation. Grimwood J. , Nature 428:529-535(2004).

Gene ID:

ZNF682

Uniprot

O95780

Synonyms:

Zinc finger protein 682; ZNF682;

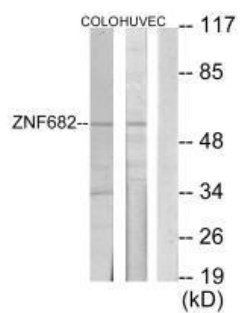
Immunogen:

Synthesized peptide derived from internal of human ZNF682.

Storage:

Rabbit IgG in phosphate buffered saline (without Mg²⁺ and Ca²⁺), pH 7.4, 150mM NaCl, 0.02% sodium azide and 50% glycerol.

Product Images



Western blot analysis of extracts from COLO205 cells and HUVEC cells, using ZNF682 antibody.