

PACO21734

Product Information

Size:

100ul

Reactivity:

Human

Source:

Rabbit

Isotype:

Applications:

ELISA, WB

Recommended dilutions:

ELISA:1:2000-1:10000, WB:1:500-1:3000

Protein Background:

Gene ID:

EPCAM

Uniprot

P16422

Synonyms:

Tumor-associated calcium signal transducer 1 [Precursor]; Major gastrointestinal tumor-associated protein GA733-2; Epithelial cell surface antigen; Epithelial glycoprotein; EGP

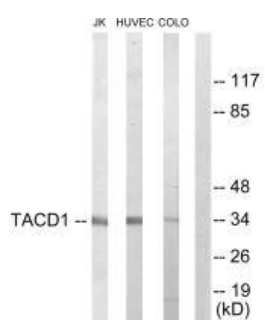
Immunogen:

Synthesized peptide derived from internal of human TACD1.

Storage:

Rabbit IgG in phosphate buffered saline (without Mg²⁺ and Ca²⁺), pH 7.4, 150mM NaCl, 0.02% sodium azide and 50% glycerol.

Product Images



Western blot analysis of extracts from Jurkat cells, HuvEc cells and COLO205 cells, using TACD1 antibody.