

### Product Information

**Size:**

100ul

**Reactivity:**

Human, Mouse

**Source:**

Rabbit

**Isotype:**

IgG

**Applications:**

ELISA, WB

**Recommended dilutions:**

ELISA:1:2000-1:10000, WB:1:500-1:3000

**Protein Background:**

Orphan receptor with a tyrosine-protein kinase activity. The exact function of this protein is not known. Studies with chimeric proteins (replacing its extracellular region with that of several known growth factor receptors, such as EGFR and CSFIR) demonstrate its ability to promote growth and specifically neurite outgrowth, and cell survival. Signaling appears to involve the PI3 kinase pathway. Involved in regulation of the secretory pathway involving endoplasmic reticulum (ER) export sites (ERESs) and ER to Golgi transport. Krolewski J. J. , EMBO J. 10:2911-2919(1991).

**Gene ID:**

LTK

**Uniprot**

P29376

**Synonyms:**

EC 2.7.1.112; EC 2.7.10.1; Leukocyte tyrosine kinase receptor precursor; Protein tyrosine kinase-1; TYK1

**Immunogen:**

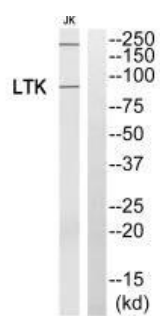
Synthesized peptide derived from internal of human LTK.

**Storage:**

Rabbit IgG in phosphate buffered saline (without Mg<sup>2+</sup> and Ca<sup>2+</sup>), pH 7.4, 150mM NaCl, 0.02% sodium azide and 50% glycerol.

## Product Images

---



Western blot analysis of extracts from Jurkat cells, using LTK antibody.