

PACO21774

Product Information

Size:

100ul

Reactivity:

Human, Mouse, Rat

Source:

Rabbit

Isotype:

Protein Background:

Gene ID:

GRK5

Uniprot

P34947

Synonyms:

EC 2.7.11.16; G-protein-coupled receptor kinase 5; GPRK5; kinase GRK5;

Applications:

ELISA, WB

Immunogen:

Synthesized peptide derived from internal of human GRK5.

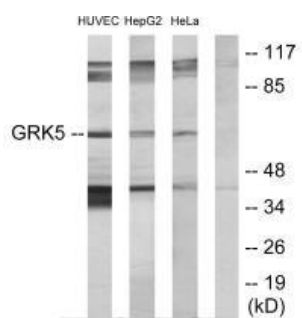
Recommended dilutions:

ELISA:1:2000-1:10000, WB:1:500-1:3000

Storage:

Rabbit IgG in phosphate buffered saline (without Mg²⁺ and Ca²⁺), pH 7.4, 150mM NaCl, 0.02% sodium azide and 50% glycerol.

Product Images



Western blot analysis of extracts from HUVEC cells, HepG2 cells and HeLa cells, using GRK5 antibody.