

# FLT3LG Antibody



PACO21788

---

## Product Information

**Size:**

100ul

**Reactivity:**

Human

**Source:**

Rabbit

**Isotype:**

**Protein Background:**

**Gene ID:**

FLT3LG

**Uniprot**

P49771

**Synonyms:**

SL cytokine [Precursor]; Fms-related tyrosine kinase 3 ligand; Flt3 ligand; Flt3L; FLT3LG

**Applications:**

ELISA, WB

**Immunogen:**

Synthesized peptide derived from internal of human Flt3 ligand.

**Recommended dilutions:**

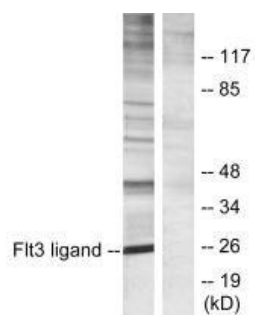
ELISA:1:2000-1:10000, WB:1:500-1:3000

**Storage:**

Rabbit IgG in phosphate buffered saline (without Mg<sup>2+</sup> and Ca<sup>2+</sup>), pH 7.4, 150mM NaCl, 0.02% sodium azide and 50% glycerol.

## Product Images

---



Western blot analysis of extracts from Jurkat cells, using Flt3 ligand antibody.