

# ADARB1 Antibody



PACO21816

---

## Product Information

**Size:**

100ul

**Reactivity:**

Human, Mouse, Rat

**Source:**

Rabbit

**Isotype:**

**Protein Background:**

**Gene ID:**

ADARB1

**Uniprot**

P78563

**Synonyms:**

EC 3.5; dsRNA adenosine deaminase; RNA-editing deaminase 1; RNA-editing enzyme 1;

**Applications:**

ELISA, WB

**Immunogen:**

Synthesized peptide derived from internal of human ADARB1.

**Recommended dilutions:**

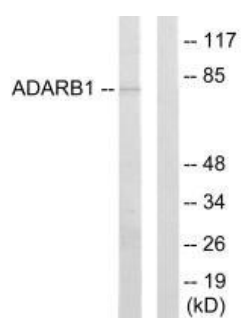
ELISA:1:2000-1:10000, WB:1:500-1:3000

**Storage:**

Rabbit IgG in phosphate buffered saline (without Mg<sup>2+</sup> and Ca<sup>2+</sup>), pH 7.4, 150mM NaCl, 0.02% sodium azide and 50% glycerol.

## Product Images

---



Western blot analysis of extracts from HepG2 cells, using ADARB1 antibody.