

### Product Information

**Size:**

100ul

**Reactivity:**

Human

**Source:**

Rabbit

**Isotype:**

IgG

**Applications:**

ELISA, WB

**Recommended dilutions:**

ELISA:1:2000-1:10000, WB:1:500-1:3000

**Protein Background:**

Transcriptional regulator that controls a genetic switch in male development. It is necessary and sufficient for initiating male sex determination by directing the development of supporting cell precursors (pre-Sertoli cells) as Sertoli rather than granulosa cells By similarity. In male adult brain involved in the maintenance of motor functions of dopaminergic neurons By similarity. Involved in different aspects of gene regulation including promoter activation or repression By similarity. Promotes DNA bending. SRY HMG box recognizes DNA by partial intercalation in the minor groove. Also involved in pre-mRNA splicing. Binds to the DNA consensus sequence 5'-[AT]AACAA[AT]-3'. Su H. , Am. J. Hum. Genet. 52:24-38(1993).

**Gene ID:**

SRY

**Uniprot**

Q05066

**Synonyms:**

Delayed-early protein HRS; HRS; Pre-mRNA splicing factor SRP40; SFR5; SRP40

**Immunogen:**

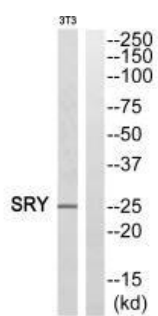
Synthesized peptide derived from internal of human SRY.

**Storage:**

Rabbit IgG in phosphate buffered saline (without Mg<sup>2+</sup> and Ca<sup>2+</sup>), pH 7.4, 150mM NaCl, 0.02% sodium azide and 50% glycerol.

## Product Images

---



Western blot analysis of extracts from HeLa cells, using SRY antibody.