

MN1 Antibody



PACO21834

Product Information

Size:

100ul

Reactivity:

Human

Source:

Rabbit

Isotype:

IgG

Applications:

ELISA, WB

Recommended dilutions:

ELISA:1:2000-1:10000, WB:1:500-1:3000

Protein Background:

May play a role in tumor suppression. The MGC Project Team, Genome Res. 14:2121-2127(2004).

Gene ID:

MN1

Uniprot

Q10571

Synonyms:

Probable tumor suppressor protein MN1; MN1;

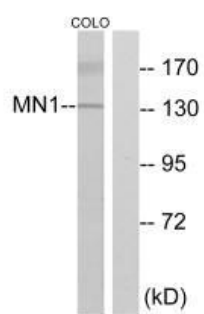
Immunogen:

Synthesized peptide derived from internal of human MN1.

Storage:

Rabbit IgG in phosphate buffered saline (without Mg²⁺ and Ca²⁺), pH 7.4, 150mM NaCl, 0.02% sodium azide and 50% glycerol.

Product Images



Western blot analysis of extracts from COLO cells, using MN1 antibody.