

# CAMK2G/CAMK2B Antibody



PACO21838

---

## Product Information

**Size:**

100ul

**Reactivity:**

Human, Mouse, Rat

**Source:**

Rabbit

**Isotype:****Applications:**

ELISA, WB

**Recommended dilutions:**

ELISA:1:2000-1:10000, WB:1:500-1:3000

**Protein Background:****Gene ID:**

CAMK2G/CAMK2B

**Uniprot**

Q13555/Q13554

**Synonyms:**

Calcium/calmodulin-dependent protein kinase type II gamma chain; EC 2.7.11.17; CaM-kinase II gamma chain; CaM kinase II subunit gamma; CaMK-II subunit gamma

**Immunogen:**

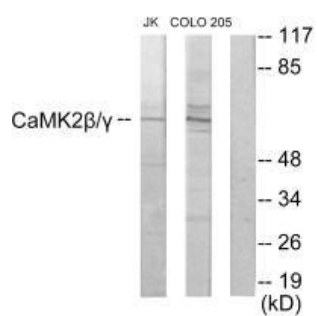
Synthesized peptide derived from C-terminal of human CaMK2 &beta; / &gamma; .

**Storage:**

Rabbit IgG in phosphate buffered saline (without Mg<sup>2+</sup> and Ca<sup>2+</sup>), pH 7.4, 150mM NaCl, 0.02% sodium azide and 50% glycerol.

## Product Images

---



Western blot analysis of extracts from Jurkat cells and COLO205 cells, using CaMK2 beta / gamma antibody.