

GIT2 Antibody



PACO21841

Product Information

Size:

100ul

Reactivity:

Human, Mouse, Rat

Source:

Rabbit

Isotype:

IgG

Applications:

ELISA, WB

Recommended dilutions:

ELISA:1:2000-1:10000, WB:1:500-1:3000

Protein Background:

GTPase-activating protein for the ADP ribosylation factor family. Nagase T. , DNA Res. 2:167-174(1995).

Gene ID:

GIT2

Uniprot

Q14161

Synonyms:

ARF GTPase-activating protein GIT2; G protein-coupled receptor kinase- interactor 2; KIAA0148; Tyrosine-phosphorylated protein CAT-2;

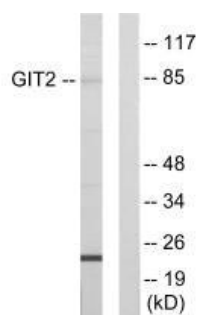
Immunogen:

Synthesized peptide derived from internal of human GIT2.

Storage:

Rabbit IgG in phosphate buffered saline (without Mg²⁺ and Ca²⁺), pH 7.4, 150mM NaCl, 0.02% sodium azide and 50% glycerol.

Product Images



Western blot analysis of extracts from HepG2 cells, using GIT2 antibody.