

Product Information

Size:

100ul

Reactivity:

Human, Mouse, Rat

Source:

Rabbit

Isotype:

IgG

Applications:

ELISA, WB

Recommended dilutions:

ELISA:1:2000-1:10000, WB:1:500-1:3000

Protein Background:

Inhibits glucokinase (GCK) by forming an inactive complex with this enzyme. The affinity of GCKR for GCK is modulated by fructose metabolites: GCKR with bound fructose 6-phosphate has increased affinity for GCK, while GCKR with bound fructose 1-phosphate has strongly decreased affinity for GCK and does not inhibit GCK activity. Hayward B. E. , Genomics 49:137-142(1998).

Gene ID:

GCKR

Uniprot

Q14397

Synonyms:

Glucokinase regulatory protein; Glucokinase regulator;

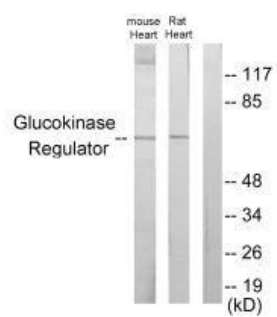
Immunogen:

Synthesized peptide derived from internal of human Glucokinase Regulator.

Storage:

Rabbit IgG in phosphate buffered saline (without Mg²⁺ and Ca²⁺), pH 7.4, 150mM NaCl, 0.02% sodium azide and 50% glycerol.

Product Images



Western blot analysis of extracts from mouse heart cells and rat heart cells, using Glucokinase Regulator antibody.