

# CEBPE Antibody



PACO21861

---

## Product Information

**Size:**

100ul

**Reactivity:**

Human, Mouse, Rat

**Source:**

Rabbit

**Isotype:****Protein Background:****Gene ID:**

CEBPE

**Uniprot**

Q15744

**Synonyms:**

CCAAT/enhancer-binding protein epsilon; C/EBP epsilon; CEBPE;

**Applications:**

ELISA, WB

**Immunogen:**

Synthesized peptide derived from internal of human CEBPE.

**Recommended dilutions:**

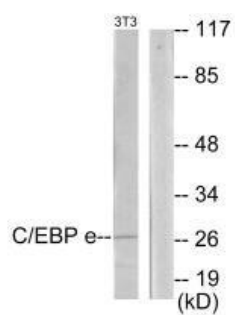
ELISA:1:2000-1:10000, WB:1:500-1:3000

**Storage:**

Rabbit IgG in phosphate buffered saline (without Mg<sup>2+</sup> and Ca<sup>2+</sup>), pH 7.4, 150mM NaCl, 0.02% sodium azide and 50% glycerol.

## Product Images

---



Western blot analysis of extracts from NIH-3T3 cells, using CEBPE antibody.