

SMAD1 Antibody



PACO21863

Product Information

Size:

100ul

Reactivity:

Human, Mouse, Rat

Source:

Rabbit

Isotype:

Protein Background:

Gene ID:

SMAD1

Uniprot

Q15797

Synonyms:

BSP-1; BSP1; Dwarfina-A; Dwf-A; JV4-1

Applications:

ELISA, WB

Immunogen:

Synthesized peptide derived from N-terminal of human Smad1/5/9.

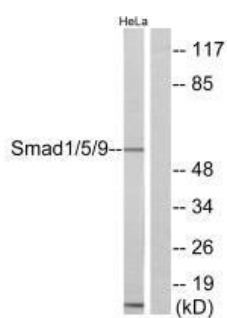
Recommended dilutions:

ELISA:1:2000-1:10000, WB:1:500-1:3000

Storage:

Rabbit IgG in phosphate buffered saline (without Mg²⁺ and Ca²⁺), pH 7.4, 150mM NaCl, 0.02% sodium azide and 50% glycerol.

Product Images



Western blot analysis of extracts from HeLa cells, using Smad1/5/9 antibody.