

AAK1 Antibody



PACO21868

Product Information

Size:

100ul

Reactivity:

Human, Mouse, Rat

Source:

Rabbit

Isotype:

Applications:

ELISA, WB

Recommended dilutions:

ELISA:1:2000-1:10000, WB:1:500-1:3000

Protein Background:

Gene ID:

AAK1

Uniprot

Q2M2I8

Synonyms:

AP2-associated protein kinase 1; EC 2.7.11.1; Adaptor-associated kinase 1; AAK1; KIAA1048

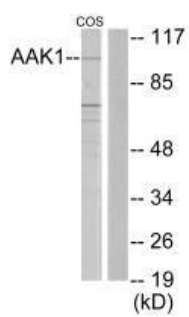
Immunogen:

Synthesized peptide derived from internal of human AAK1.

Storage:

Rabbit IgG in phosphate buffered saline (without Mg²⁺ and Ca²⁺), pH 7.4, 150mM NaCl, 0.02% sodium azide and 50% glycerol.

Product Images



Western blot analysis of extracts from COS7 cells, using AAK1 antibody.