

Product Information

Size:

100ul

Reactivity:

Human

Source:

Rabbit

Isotype:

IgG

Applications:

ELISA, WB

Recommended dilutions:

ELISA:1:2000-1:10000, WB:1:500-1:3000

Protein Background:

The function of this protein is not yet clear. It is not known if it has protein kinase activity and what type of substrate it would phosphorylate (Ser, Thr or Tyr). The MGC Project Team, Genome Res. 14:2121-2127(2004).

Gene ID:

ADCK5

Uniprot

Q3MIX3

Synonyms:

Uncharacterized aarF domain-containing protein kinase 5; EC 2.7.11; ADCK5;

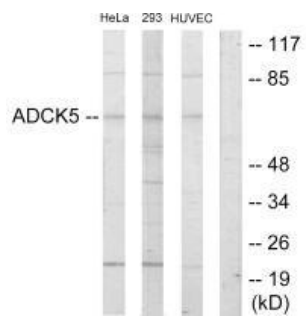
Immunogen:

Synthesized peptide derived from internal of human ADCK5.

Storage:

Rabbit IgG in phosphate buffered saline (without Mg²⁺ and Ca²⁺), pH 7.4, 150mM NaCl, 0.02% sodium azide and 50% glycerol.

Product Images



Western blot analysis of extracts from HeLa cells, 293 cells and HUVEC cells, using ADCK5 antibody.